

COMPANY PROFILE

Your Reliable Logistics Partner



| Company Overview

| Logistics Services

| Key References

| Contact Us

Samil Logistics

Founded in 1987 as a freight transport company, Samil Logistics has evolved over the past 38 years into a comprehensive logistics partner, collaborating with leading Korean companies in various sectors such as electronics, machinery, equipment, construction, steel, automotive, and manufacturing. Samil Logistics is committed to promptly and accurately addressing the needs of its clients, optimizing logistics efficiency, and reducing costs through customer-focused consulting, ensuring the delivery of top-tier comprehensive logistics solutions.

Our mission

Our mission is to put our customers' success first and become a trusted logistics partner.

Our vision

Based on 38 years of experience and know-how, we aim to become a comprehensive logistics company that continues to grow by drawing digital competitiveness in line with the changing times.

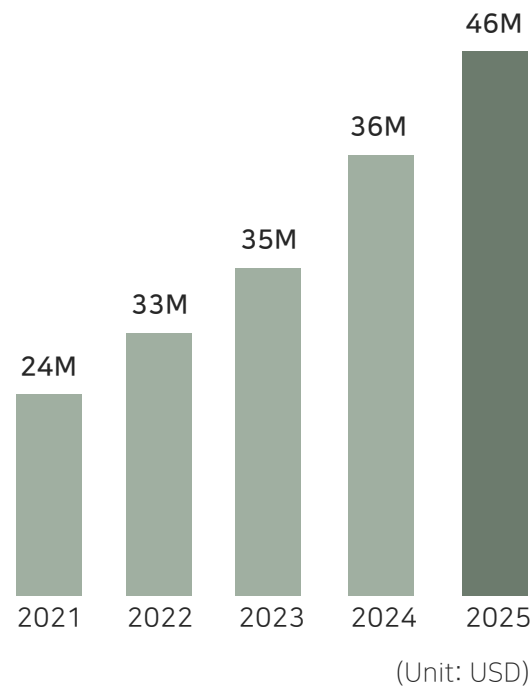
Decades of operational experience provide optimal logistics solutions tailored to customer's needs

Status	Business Area	Locations
<ul style="list-style-type: none">Year Established1987Number of Employees50Number of Clients200+Annual Revenue\$36MNumber of Trucks300+Yearly Freight Volume180,000+Monthly Transaction Volume14,500+Daily Freight Volume700+	<ul style="list-style-type: none">B2B Corporate Cargo TransportationSpecial Cargo TransportationHeavy and Long-Length Cargo TransportationExport Packaging ServicesWarehousing & Storage Services3PL (Third-Party Logistics)Bonded TransportationInternational Freight ForwardingDangerous Goods and Hazardous Chemicals TransportationWaste Collection and TransportationDesignated Waste Collection and TransportationHigh-Pressure Gas Transportation	<ul style="list-style-type: none">Asan Yeomchi(Headquarter)Asan Inju(Branch)Asan Eumbong(Branch)Asan Tangjeong(Branch)Anseong(Branch)Dangjin(Branch)Pyeongtaek(Branch)Busan(Branch)Seoul(Branch)Yongin(Branch)

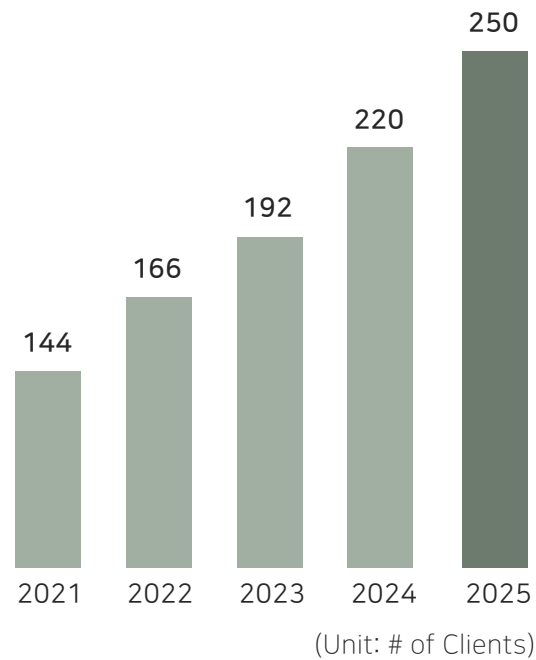
(As of 2024)

Continuous growth and improvement enable us to provide customers with better logistics services

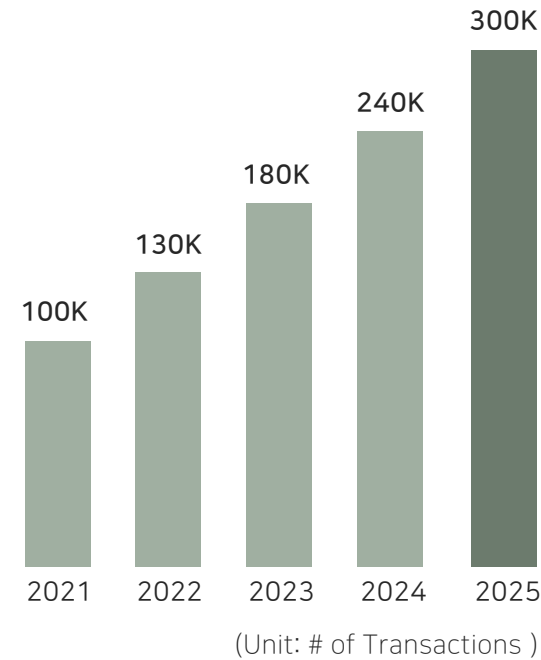
| Sales Growth



| Number of Clients



| Transaction Volume



Provide reliable logistics services with various licenses, international certifications, and all types of trucks

Licenses

- Freight Forwarding License
- General Cargo Transportation License
- Special Cargo Transportation
- Hazardous Chemicals Transportation Permit License
- Construction Equipment Rental License
- International Logistics Brokerage License
- Bonded Transportation Business License
- Waste Collection and Transportation License
- High-Pressure Gas Transportation License (expected by 2025)

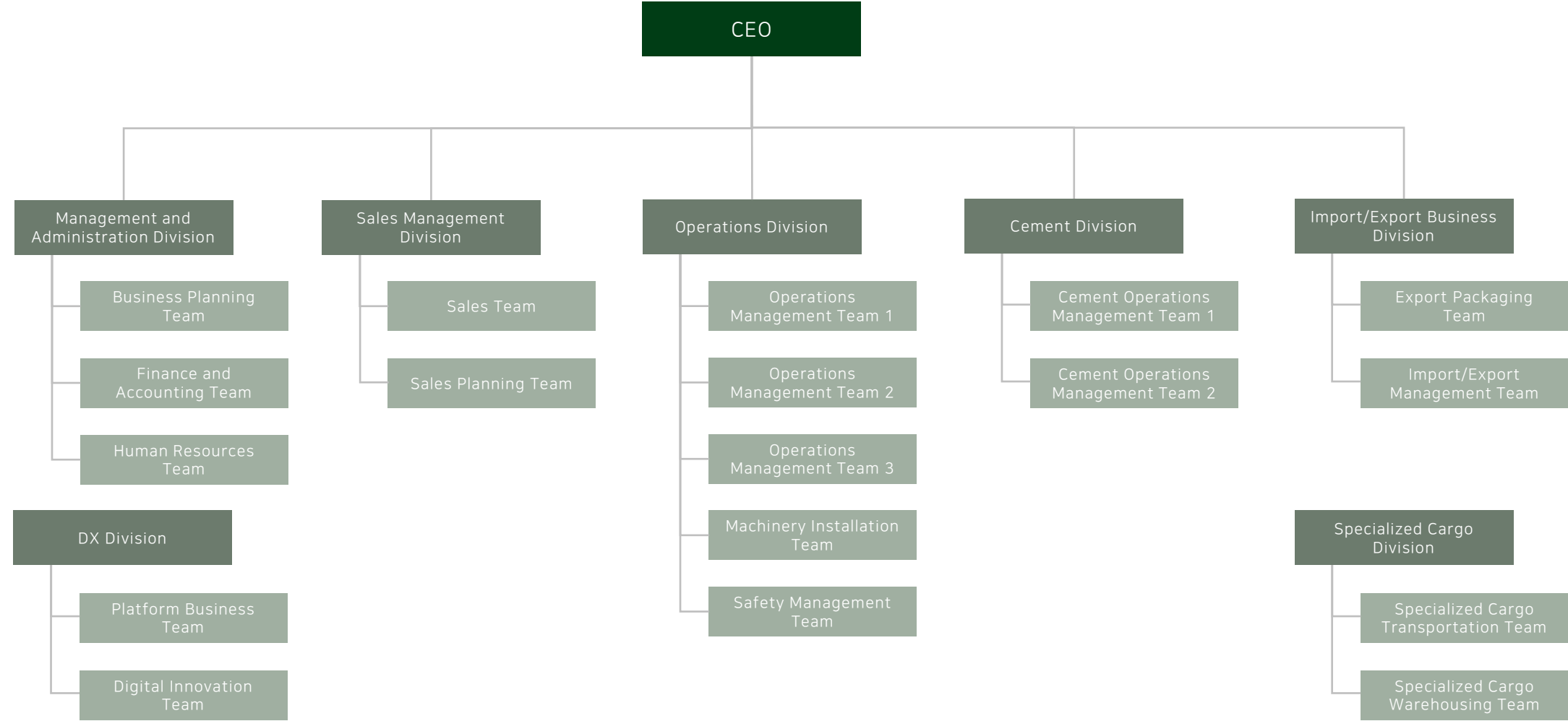
Certifications

- **ISO14001** (International Standard for Environmental Management Systems)
- **ISO45001** (International Standard for Occupational Healthy and Safety Management System)
- **ISO9001** (International Standard for Quality management systems)

Operating Vehicle Types

- 1 to 25 tons Cargo + Wing Body Trucks
- Lowbed/Flatbed/Anti-vibration Trailers
- Modular Trailers
- 7 to 55 tons Forklifts
- BCC/BCT Trucks
- 20ft/40ft/FR Containers

(As of 2024)

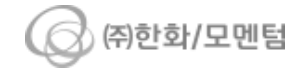




SAMSUNG DISPLAY



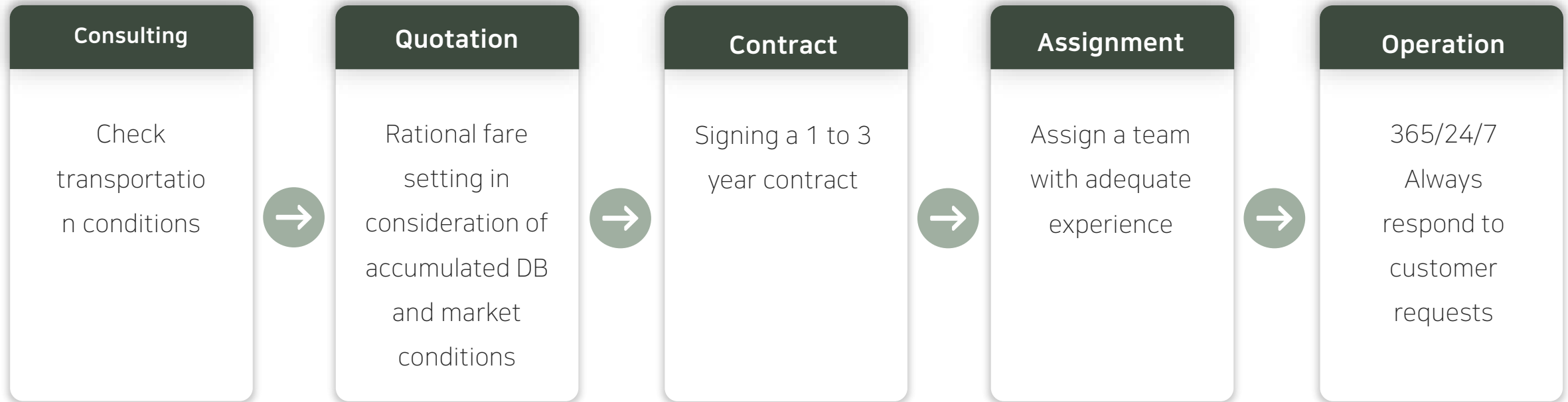
Kiturami



AMOREPACIFIC



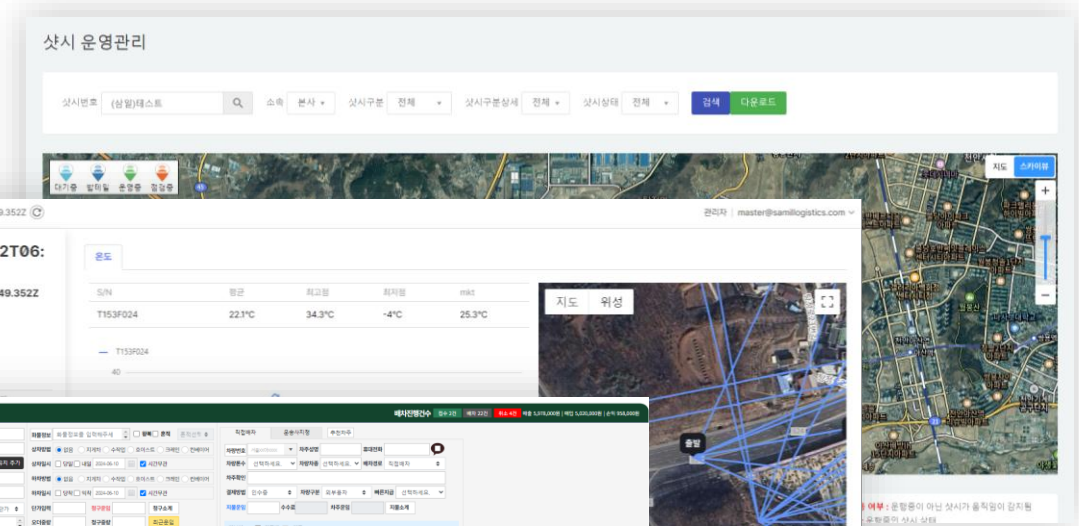
Responsible for providing high-performance logistics services from initial consulting to on-site performance



Monitoring temperature, humidity, and location, along with business automation, is crucial to meet clients' needs



Utilize location control services to track cargo travel routes and manage transportation status in real time



Closely monitor the customer's cargo condition through temperature/humidity/shock management

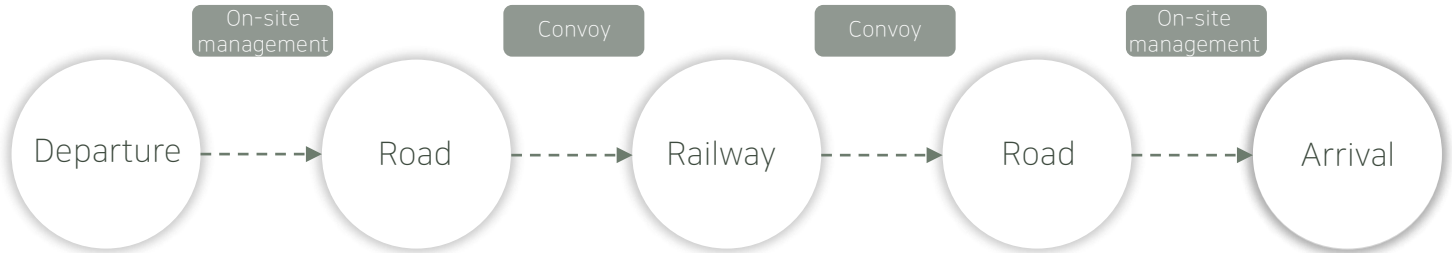


Efficient with internalized TMS and RPA

[illegible]

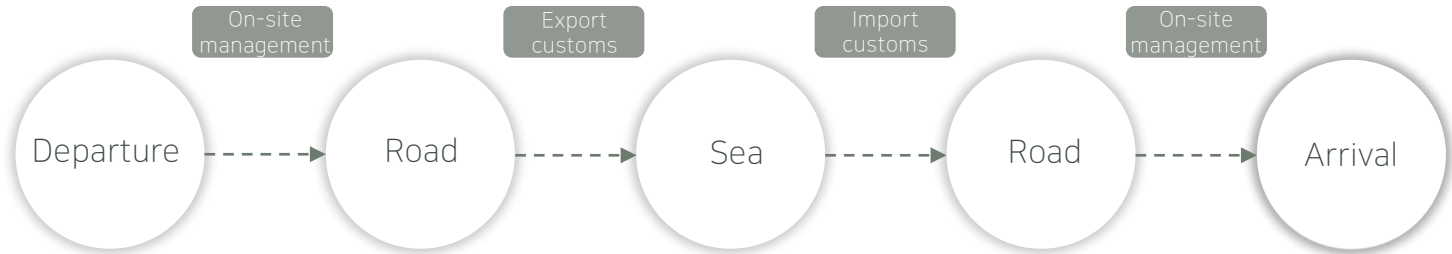
Combines the advantages of each mode of transportation through the connection of sea/air/road/railway

Domestic
Multimodal
Transportation



Reference: "K9 self-propelled artillery" was transported from Changwon to station using a module trailer ⇒ Transported to a cargo station near the military unit by rail ⇒ Completed transportation to the military unit by road

International
Multimodal
Transport



Reference: Completed export packaging of "semiconductor facilities" in Asan ⇒ Transported 40' container or FR container to CFS near Busan New Port via road ⇒ Shipped to Sweden via sea⇒ Transported via local trucking

The national network optimizes transportation routes and enhances transport efficiency

Domestic Operation Sites

Location: Asan, Anseong, Dangjin, Pyeongtaek, Paju, Gumi, Busan, Changwon, Seoul, Yongin

Function: Sales, Operations, Management

Domestic Network

Location: Gyeonggi-do, Incheon, Chungcheongnam-do, Chungcheongbuk-do, Daejeon, Jeollanam-do, Jeollabuk-do, Gyeongsangnam-do, Gyeongsangbuk-do



Domestic Partners

Location: Incheon, Pyeongtaek, Busan, Jeju

Function: Expanding cargo vehicle sourcing capabilities

Overseas Network

Location: Vietnam, China
International and local inland transportation

Function: International and local inland transportation

Optimized transportation solutions backed by years of accumulated know-how and hands-on experience

Direct Operation

Manage all processes from consulting to planning and operations, ensuring reliability and efficiency for customers.

Cost Reduction

Operate directly through exclusive trucks, offering competitive services to customers at reasonable costs.

Field Oriented

Managers prioritize fieldwork and respond promptly to unexpected or emergency situations under any circumstances.

Know-hows

With various types of know-how accumulated over decades, we provide reliable transportation services based on extensive experience.

Competitive services focused on customer-centricity, field orientation, and practical execution skills

Subject	Samil Logistics		Competitors
Operational Capability	With 37 years of accumulated know-how, able to arrange any type of transportation	✓	Operate through subcontracted transport companies
Field Readiness	Managers in charge can respond to emergency situations 24/7 directly on site	✓	Lack the ability to respond to emergencies
Operating Cost	Direct management structure enables offering reasonable fares without intermediate fees	✓	Multi-level structure incurs an additional 6% to 10% fee
Safety Management	Provide safety training on actual possible issues and have a complete response manual for emergencies	✓	Lack practical safety management
Cargo Driver Management	Through continuous cargo driver management, reserve vehicles are ready for sourcing	✓	Unable to interact with drivers due to subcontracting

Responding promptly and efficiently to various circumstances based on our experience in automotive parts

Daily Freight Volume:

210 trucks

Number of Operating Trucks:

73 trucks

Type of Cargo:

Bumper, wire, spring, tire, etc

Job Features:

Sequential delivery, loading and unloading operations

Yearly Sales:

1.2 million dollars

Key Clients:

Dongkuk Industrial, Daewon, BMI, Kumho Tire, etc



Efficiently process complex and urgent construction material logistics with rich experience and know-how

Daily Freight Volume:	230 trucks
Number of Operating Trucks:	78 trucks
Type of Cargo:	Cement, concrete piles, etc

Job Features:	Emergency transportation, Sequential delivery
Yearly Sales:	1 million dollars
Key Clients:	Sampyo, Eugene Corporation, Goryeo Cement, etc



Safe and professional freight transportation with skilled staff tailored to special cargo traits

Daily Freight Volume:	10 trucks
Number of Operating Trucks:	20 trucks
Type of Cargo:	Military defense supplies, etc

Job Features:	Modular Trailer, Safety Plan, Convoy
Yearly Sales:	0.2 million dollars
Key Clients:	Hanwha Aerospace, Hyundai Rotem, etc



Safe transportation through thorough on-site management from understanding the characteristics of cargo

Daily Freight Volume:	120 trucks
Number of Operating Trucks:	90 trucks
Type of Cargo:	Display facilities, robots, etc

Job Features:	Heavy/Large cargo transportation
Yearly Sales:	0.7 million dollars
Key Clients:	Samsung Display, SFA, Hanwha Machinery, etc



Equipped with professional operations teams, vehicles, and equipment tailored to the characteristics of the cargo

Daily Freight Volume:	50 trucks
Number of Operating Trucks:	30 trucks
Type of Cargo:	Air conditioners, cooling towers, etc

Job Features:	Heavy/large cargo, on-site management
Yearly Sales:	0.3 million dollars
Key Clients:	Kiturami, Bumyang, Century, etc



Key Performances | Oversized Loads and High-Value Goods

Transportation services from export packaging to inland trucking, customs clearance, and international shipping

Daily Freight Volume:	30 trucks
Number of Operating Trucks:	30 trucks
Type of Cargo:	Semiconductor equipment, etc

Job Features:	Oversized loads, both local and global transport
Yearly Sales:	0.1 million dollars
Key Clients:	SFA, Ronbay, Dooil TPS, etc



Key Performances | High-Value Precision Equipment



Eco-friendly and economical transportation services by reducing packaging time and costs

Daily Freight Volume:	40 trucks
Number of Operating Trucks:	10 trucks
Type of Cargo:	Semiconductor equipment, etc

Job Features:	Temperature/Humidity-Controlled, Vibration-Free
Yearly Sales:	0.2 million dollars
Key Clients:	SFA, ASMK, Hankook E&C etc



CONTACT US

Head Office

645-44 Asan-ro, Asan-si, Chungnam

Tel: +82.41.532.3131

www.SamilLogistics.com

Seoul Sales Office

77, Banpo-daero 22-gil, Seocho-gu, Seoul, Korea (6F)

Email: Seoul@SamilLogistics.com / Sales Representative: +82.10.9022.2385

Yongin Branch

1204, Dongbu-ro, Cheoin-gu, Yongin-si, Gyeonggi-do, Korea

Email: Yongin@SamilLogistics.com / Sales Representative: +82-10-5406-6904

Busan Branch

88, Jungang-daero, Jung-gu, Busan, Korea (Suite 1301) Email:

Busan@SamilLogistics.com / Sales Representative: +82-10-7768-4789

Thank You.